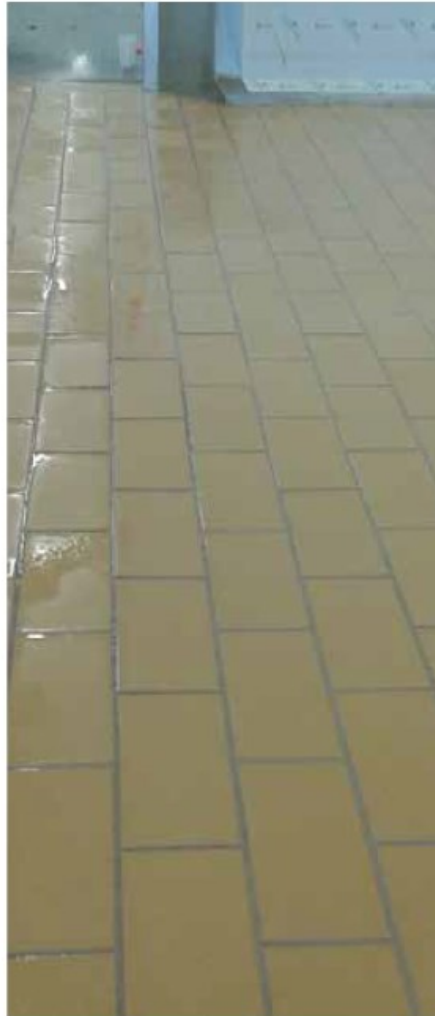


Antiacid tile for industrial floor
Range 1050 Extruded and 1850 Extruded



CE

Assortment :

Dimensions in mm :	1050/12	1050/18 1850/18	1055 K100	1038 K100	1058 K100
Color :	Yellow	Yellow	Yellow	Yellow	Yellow
Pces / m² :	40	40	-	-	-
Pces / m :	-	-	4.60	-	-
Weight : kg / pce :	0.64	1.01	0.77	0,12	0,12
Weight : kg / m² :	22	41	-	-	-

Description of the product :

Vitrified stonewares, based on natural clay, is wet pressed and then stretched. After firing at high temperature, a compact mass is obtained with high resistance to mechanical and thermal shocks. Antacid stoneware tiles are available with smooth and anti-slip surfaces:

- The 1050 with a smooth R10 surface,
- The 1850 with an incorporation of hard grains that give a rough, anti-slip R11 surface.

Application:

Due to their high resistance to chemical products (acids, bases, ...), the 1050 and 1850 tiles are designed for the realization of industrial floor and wall coverings.

Due to their very high resistance to mechanical and thermal shocks, as well as their low water absorption, these tiles are particularly suitable for food processing industries (dairies, cheese factories, canneries, breweries, etc...). With their high resistance to usury and their easy maintenance, they are also designed to be applied in highly stressed buildings. For more information, please refer to our *Floor Recommendation Guide*.

Selection and control:

Tiles 1050 and 1850 are only delivered as first choice. The format, parallelism, flatness and straightness of the edges are subject to a strict factory control. The values determined by EN 14411 may not be exceeded. A certain tolerance is allowed for color shading. Water absorption as well as other physical and mechanical characteristics are regularly checked.

Frost resistance:

Tiles 1050 and 1850 are frost resistant. For outdoor installation (uncovered terraces, etc...), we recommend the installation of a drainage layer.

Other information:

For the laying of the tiles, please refer to our technical documentations Methods of laying. To maximise the life of your tile flooring, we recommend the use of our complete range of antacid mortars, specially designed to fulfil your needs.

Delivery:

Höganäs tiles are delivered from our warehouse in Rochetoirin or by truck directly from the factory.

Technical description according to EN14411 - Class A1a	Standards	Requirements	Results
Water absorption	ISO 10545-3	≤ 0.5 %	< 0.5%
Breaking strength	ISO 10545-4	S ≥ 1300 N	> 3000 N (12 mm) > 5000 N (18 mm)
Modulus of rupture	ISO 10545-4	R ≥ 28 MPa	≥ 35 MPa
Resistance to deep abrasion	ISO 10545-6	≤ 275 mm ³	< 210 mm ³
Frost resistance	ISO 10545-12	Required	Warranty
Resistance to acids and alkaline	ISO 10545-13	-	UHA
Resistance to cleaning products for home and cleaning products for swimming-pool	ISO 10545-13	GB	UA
Anti-slip classification	DIN 51130 DIN 51130	- 1050 - 1850	R10 R11

The information contained in this sheet is for information purposes only. The information provided is based on our current knowledge. It is the responsibility of the user to check that this sheet is the most recent. As we have no influence on the use of our products or the laying conditions specific to each construction site, we cannot be held responsible for the final result or any other indirect consequences.

